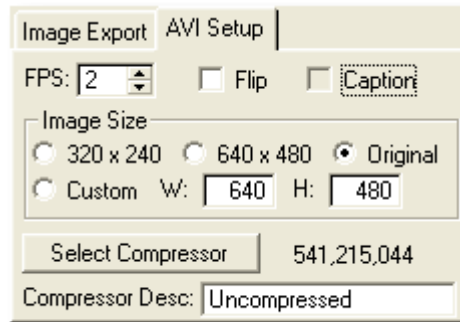
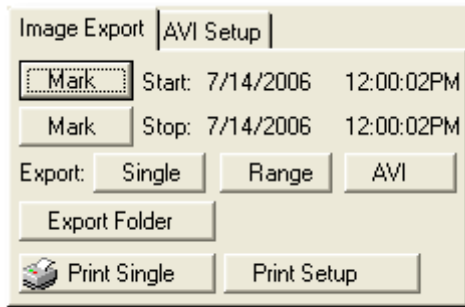


# vPlay Export Procedure



## Image Export Setup

- 1) Create a folder to export image too.
- 2) Run vPlay
- 3) Click the Export Folder and select the folder created in step 1 above.
- 4) Find first image you want to export and click on Mark Start.
- 5) Determine if you need one image to more than one image.
  - a) For a single image skip down to Export Single JPEG Image.
  - b) For more than one image; find last image to export and click on Mark Stop.
- 6) You have completed the Image Export Setup, please select and perform the desired Export Option below.

## Export Option 1 (Export Single JPEG Image)

- 1) Clicking the Export Single will export the current image displayed to the Export Folder.

## Export Option 2 (Export Range of JPEG Images)

- 1) Clicking the Export Range will export all images (JPEG) in the selected range to the Export Folder.

## Export Option 3 (Export Images to AVI File)

- 1) Click on the AVI Setup tab and Select Compressor.
  - a) For no compression select Full Frames (No Compression).
  - b) To add compression, select MPEG4 or DivX or another codec you are familiar with.
- 2) Click the Import/Export tab and click the Export AVI command button.

## Notes

- 1) When creating AVI files you must be aware that Microsoft limits the AVI file to 2GBs.
- 2) Uncompressed AVI files tend to be very large whereas other compressed formats will be considerably smaller.
- 3) When playing AVI files on another computer you must have the same codec installed in order to view the AVI file.
- 4) When dealing with law enforcement
  - a) Always provide the individual JPEG files.
  - b) When AVI format is requested, select the no compression option in Export Option 3, step 1a above.
  - c) When compressed AVI format is requested, provide AVI files and the name of the codec selected in Export Option 3, step 1b above.